

## Ethernet Cables



SKU	CBL100C6RXU	CBL200C6RXU	CBL300C6RXU
	CAT6 Outdoor Extension Cable (100ft)	CAT6 Outdoor Extension Cable (200ft)	CAT6 Outdoor Extension Cable (300ft)
Length (ft)	100	200	300
Technology	Cat6	Cat6	Cat6
UL Certified	Yes	Yes	Yes
CMR Riser Rated	Yes	Yes	Yes
Outdoor Usage	Yes	Yes	Yes
Waterproof	Yes	Yes	Yes
Water Resistant	Yes	Yes	Yes
Fire Resistant	Yes	Yes	Yes
Direct Burial Underground	Yes	Yes	Yes
Camera Connector Shield	Yes	Yes	Yes

Scan the QR code to visit the product page for additional features and expanded specs.



## Ethernet Cables



SKU	CBL100C5	ACR-U11W-E
	Cat5e Network Ethernet Cable (100ft)	Bulk Cat6 UTP Ethernet Cable Spool (1,000ft)
Length (ft)	100	1,000
Technology	Cat5e	Cat6, UTP
UL Certified	Yes	Yes
CMR Riser Rated	-	Yes
CM Rated	Yes	-
Water Resistant	Yes	Yes
Fire Resistant	Yes	Yes

Scan the QR code to visit the product page for additional features and expanded specs.



## Power Adapters



SKU	ACPWFBK1	ACPWF1	ACWFDPS
	Black Power Adapter for Wire-Free Cameras with Weatherproof Cover	White Power Adapter for Wire-Free Cameras with Weatherproof Cover	Micro USB Power Cable and Power Supply
Power Technology	Wall Outlet	Wall Outlet	Wall Outlet
Output Voltage	5V	5V	5V
Output Current	2A	2A	2A
Removable Power Plug	No, Default North America (Type A)	No, Default North America (Type A)	Yes
Cable Length	4.5 meters	4.5 meters	3 meters
Output Connector Type	Micro USB	Micro USB	Micro USB
Color	Black	White	White
No. of Cable Clips	3	3	4
Compatibility	Series of U424AA, U222AA, LWB6850, LWB6800, LWB5800, LWB4900, LWB4850, LWB4800		U471AA wire-free camera

Scan the QR code to visit the product page for additional features and expanded specs.



## Power Adapters



SKU	ACCPWR12V1	ACCPWR12V2AH4B	AP24V500B
	12V Regulated DC Security Power Adapter 1A	4-in-1 Security Camera Power Adapter 12V 2A	Doorbell Power Adapter
Power Technology	Wall Outlet	Wall Outlet	Wall Outlet
Output Voltage	12V	12V	24Vdc±5%
Output Current	1A	2A	1.0A maximum
Removable Power Plug	No, Default North America (Type A)	No, Default North America (Type A)	Yes (North America and UK included)
Output Connector Type	DC Coaxial Connector	DC Coaxial Connector	Eyelet Connector RV1-3.2
Color	Black	Black	Black
No. of Cable Clips	Nil	Nil	12
Compatibility	All Lorex wired security cameras with power consumption rating < 1A	All Lorex wired security cameras with total current consumption of connected cameras < 2A	B241AJD, B451AJD, B463AJ, LNWD81, B862AJ

Scan the QR code to visit the product page for additional features and expanded specs.



## Memory Cards



SKU	ACCSD64G2W-F	ACCSD256G2W-F
	64GB Surveillance-grade microSD card	256GB microSD Card (Surveillance Grade)
Storage Capacity	64GB	256GB
Form Factor	microSDXC	microSDXC
Speed Class	UHS Speed Class 1 (U1) / Video Speed Class 10	UHS Speed Class 1 (U1) / Video Speed Class 10
Endurance	Up to 32 terabytes written	Up to 128 terabytes written
Sequential Read Performance	Up to 100 MB/s	Up to 100 MB/s
Sequential Write Performance	Up to 20 MB/s	Up to 20 MB/s
Operating Temperature	-25°C to 85°C	-25°C to 85°C
Compatibility	B241AJD, B451AJD, B463AJ, V261LCD, W452ASD, W281AA, W282CAD, W482CAD, W881AAD, W261AQC-E, W462AQC-E, W261ASC-E, W461AS, F461AQD, L871T8, ACH20-1B, ACH20-TPC-M20	

Scan the QR code to visit the product page for additional features and expanded specs.



## Wi-Fi Chimeboxes



SKU	ACCHM2-B
	Lorex Wi-Fi Chimebox
Power	Outlet
Communication	2.4GHz Wi-Fi
Replacement Power Plug	Yes (US, UK, AU, EU - Type C)
Built-in Speaker	Yes
No. of Chime Sounds	13
No. of Volume Level	4 (incl. mute)
Certification	FCC, CE, UKCA, RCM
Compatibility	LNWDB1, B241AJD, B451AJD, B463AJD, B862AJ, B861AJ

Scan the QR code to visit the product page for additional features and expanded specs.



## Solar Panels



SKU	ACSOL3-E
	Solar Panel for Battery-Operated Cameras & Doorbells
Power Technology	Solar
Power	3.2W
Voltage	6V
Current	530mA
Ingress Protection Rating	IP65
Cable Length	4 meters
Dahua USB Head Compatibility	Yes (via adapter)
Raysharp USB Head Compatibility	Yes
Color	White
Operating Temperature	-30°C to 70°C
Device Compatibility	U471AA, Series of U855AA, U424AA, U222AA, F462AQ,

Scan the QR code to visit the product page for additional features and expanded specs.



## Battery Packs



SKU	ACBATTR3A	ACBATTR3 (EOL)
	Accessory Power Pack Plus for Lorex Wire-Free Cameras (3-Cell)	Accessory Power Pack Plus for Lorex Wire-Free Cameras (3-Cell)
Technology	3-Cell Lithium-ion	3-Cell Lithium-ion
Battery Capacity	8,700mAh	8,700mAh
Estimated Usage Per Charge	~6 months	~6 months
Removable Cover	Matte Black, Matte White	Matte Black, Glossy White
Charging LED	Yes (Red or Green when fully charged)	Yes (Red or Green when fully charged)
Charging Port	Micro USB	Micro USB
Compatibility	Series of U855AA, U424AA, U222AA, LWB6850, LWB6800, LWB5800, LWB4900, LWB4850, LWB4800	Series of U424AA, U222AA, LWB6850, LWB6800, LWB5800, LWB4900, LWB4850, LWB4800

Scan the QR code to visit the product page for additional features and expanded specs.



## Sensors



SKU	AM41TK / AM41TKG	AK41TK / AK41TKG
	Add-on Motion Sensor	Add-on Window / Door Sensor
Technology	BLE5.0	BLE5.0
Power	CR2450	CR1632
Max. of Sensors Connected	N/A	N/A
Armed/Disarmed Capability	Yes	Yes
Lorex Home Mobile App	Yes	Yes
Compatibility	Lorex Sensor Hub (AY41TR), Lorex Smart Home Security Center (L871T8E-E)	

Scan the QR code to visit the product page for additional features and expanded specs.



SKU	Lorex Sensor Hub	Smart Sensor Kit with 2 Window/Door Sensors and 1 Motion Sensor
Technology	Wi-Fi, BLE5.0	Wi-Fi, BLE5.0
Power	AC Power Adapter	AC Power Adapter (AY41TR), CR1632 (AM41TK), CR2450 (AM41TK)
Max. of Sensors Connected	10	10
Armed/Disarmed Capability	-	Yes
Lorex Home Mobile App	Yes	Yes
Compatibility	D861, D862, D863, D871B, D881, N842, N843, N844, N845, N846, N862, N863, N864	

Scan the QR code to visit the product page for additional features and expanded specs.



## PoE Switches



SKU	AEX8	AEX8-2	ACCLPS263B
	8-Port ePoE Switch	8-Port ePoE Switch	16-Channel PoE+ Switch
Switch Type	Unmanaged	Unmanaged	Unmanaged
No. of Ports (10/100Base-TX)	8	8	16
No. of Ports (10/100/1000-T)	1	1	1
No. of Ports (1000Base-X SFP)	1	1	1
IEEE 802.3 Ethernet	Yes	Yes	Yes
IEEE 802.3u Fast Ethernet	Yes	Yes	Yes
IEEE 802.3ab Gigabit Ethernet	Yes	Yes	Yes
IEEE 802.3x Full-duplex flow control	Yes	Yes	Yes
IEEE 802.3af PoE	Yes	Yes	Yes
IEEE 802.3at PoE+	Yes	Yes	Yes
IEEE 802.3z	Yes	Yes	-
Hi-PoE	Yes	Yes	-
ePoE	Yes	Yes	-
IEEE 802.3bt PoE++	Yes	Yes	-
LED indicators	Yes	Yes	Yes
PoE Power Consumption	60W (Port 1, 5), 30W (Port 2, 3, 4, 6, 7, 8)	90W (Port 1, 5), 30W (Port 2, 3, 4, 6, 7, 8)	30.8W
Total PoE Power Consumption	120W	120W	220W
Compatibility Cameras	All PoE IP Cameras, ePoE IP Camera	All PoE IP Cameras, ePoE IP Camera	All PoE IP Cameras

Scan the QR code to visit the product page for additional features and expanded specs.



## PoE Converters






SKU	ACVTR	ACVRC
	Coaxial to Ethernet Converter for PoE Cameras (Transmitter)	Coaxial to Ethernet Converter for PoE Cameras (Receiver)
Function Port	1*10/100 Mbps Base-TX, 1*BNC	1*10/100 Mbps Base-TX, 1*BNC
Power Consumption	<2W	<2W
Transmission Bandwidth	RG59 coaxial cable: 400m/100Mbps, 1000m/10Mbps	RG59 coaxial cable: 400m/100Mbps, 1000m/10Mbps
PoE Protocol	48V Passive PoE (Pairs 1, 2+; 3, 6 Return)	48V Passive PoE (Pairs 1, 2+; 3, 6 Return)
Network Standard	IEEE802.3, IEEE802.3u, IEEE802.3x	IEEE802.3, IEEE802.3u, IEEE802.3x
Lightning Protection	Common Mode 4KV	Common Mode 4KV
Operating Temperature	Differential Mode 2KV -30°C to 65°C (-22°F to 149 °F)	Differential Mode 2KV -30°C to 65°C (-22°F to 149 °F)
Operating Humidity	5%-95%	5%-95%
Weight	61 g (0.13 lb)	61 g (0.13 lb)
Dimension (W×D×H)	79 × 52 × 23 mm	79 × 52 × 23 mm
Compatibility Cameras	Supports PoE Cameras, ePoE Cameras	Supports PoE Cameras, ePoE Cameras


Scan the QR code to visit the product page for additional features and expanded specs.





### Ethernet over Cable & PoE Solutions


Name		2 Port PoE+ Splitter 25W (300ft) Daisy Chain Compatible	
SKU		ALP-HPS-01	
Interface	EoDownlink	2 x RJ-45	
	Uplink	1 x RJ-45 - 10/100 Base-T with Auto-detect MDIX	
Transmission Rate	Internet /PoE	Up to 100m - 1000 Base-T	
Transmission distance		Up to 200m between devices - 10/100 Base-T	
LED Indication	Data	3 x Data Link (Green)	
	PoE	3 x PoE Link (Amber)	
	Power	1 x Input Power Quality. (Green: Normal/48VDC and more, Green+Red: Caution, Red : Power Shortage/38VDC and below)	
Power Input	PoE	IEEE802.3af, IEEE802.3at	
	DC	DC48V - 57V	
Power Output	PoE	IEEE802.3af, IEEE802.3at	
Compliance	Certification	FCC, CE, KC, RoHS	
Surge Protection		IEC 61000-4-5 4kV(1.2 / 50us), 2kV(8 / 20us)	


Name		Single Port Mid Range Ethernet over UTP Converter with POE Extender Capability (1300ft)	
SKU		ALP-EUP-01T	ALP-EUP-01R
Interface	EoC Signal	1 x RJ45 - Ethernet over UTP (T-LinX)	
	Ethernet	1 x RJ45 - 10/100 Base-T with manual	
Transmission Rate	Internet /PoE	10/100Mbps Full Duplex	
Transmission distance	Ethernet	up to 400 m (Cat5e UTP Cable)	
LED Inditcation	Ethernet	1 x Link (Yellow) / 1 x ACT (Green)	
Power	Input	B-Link or DC48V-57V	PoE Switch or DC48V-57V
	PoE Output	IEEE802.3af (PoE), IEEE802.3at (PoE+), Extra PoE up to 60W with 57V Power Adaptor	PoE Not Supported, PoC Only
	PoE Input	Up to 25.5W (PD)	Up to 25.5W (PD)
Compliance	Certification	FCC, CE, KC, RoHS	
	Surge Protection	IEC 61000-4-5 4kV(1.2 / 50us), 2kA(8 / 20us)	

Name		Single Port Mid Range Ethernet over 2 wire Converter with POE Extender Capability (1000ft end-to-end)	
SKU		ALP-ETP-01T	ALP-ETP-01R
Interface	2-Wire	1 x 2-Pin Terminal Block-Ethernet over 2-Wire cable	
	Ethernet	1 x RJ45 - 100 Base-T	
Transmission Rate		100Mbps Full Duplex, (100Mbps between Intercoax devices)	
Transmission distance	Ethernet	Up to 300m (1 Pair of Cat.5e)	
	PoE (PoC)	Up to 300m (1 Pair of Cat.5e / 7W Camera)	
LED Inditcation	Ethernet	1 x Link (Yellow) / 1 x ACT (Green)	
	Power	Input	T-Linx or DC48V-57V PoE Switch or DC48V-57V
	PoE Output	IEEE802.3af (PoE),IEEE802.3at (PoE+), Extra PoE up to 60W with 57V Power Adaptor	PoE Not Supported, PoC Only
Compliance	Certification	FCC, CE, KC, RoHS	
	Surge Protection	IEC 61000-4-5 4kV(1.2 / 50us), 2kA(8 / 20us)	

### Ethernet over Cable & PoE Solutions

Name		Single Port POE Repeater 25W (300ft end-to-end)	
SKU		ALP-EPR-III	
Interface	LAN / PoE In	1 x RJ45 - 10/100 Base-T with Auto-detect MDIX	
	LAN / PoE Out	1 x RJ45 - 10/100 Base-T with Auto-detect MDIX	
Transmission Rate		100Mbps Full Duplex	
Transmission Distance		100m **(200m)	
LED Indication	Ethernet	1 x Data(Green)	
	Power	1 x PoE(Yellow)	
PoE	Standards	IEEE802.3af/at(PoE)	
	Max. Power	Max. 25W	

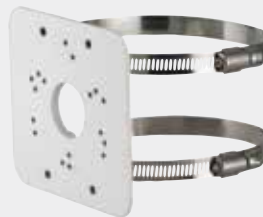
Name		Long Range Ethernet over Coaxial Converter with POE Extender Capability (4000ft)	
SKU		ALP-ECP-260IT	ALP-ECP-260IR
Interface	Coax	1 x 75Ω BNC (Female) - Ethernet over Coax (B-LinX)	
	Ethernet	1 x RJ45 - 10/100 Base-T with Auto-detect MDIX	
Transmission Rate		95Mbps Full Duplex (270Mbps between Intercoax devices)	
Transmission distance	Ethernet	up to 2.4Km(RG-6)	
	PoE (PoC)	up to 1.2Km (RG-6 / 7W camera)	
LED Inditcation	Ethernet	1 x Data-Link (Yellow)	
	EoC	1 x Join-Link (Green)	
	Power	1 x Power On(Amber)	
	PoE	1 x PoE Out (Red)	
	Encryption	-	128-bit AES
Power	Input	B-Linx or DC12V-57V	PoE Switch or DC12V-57V
	PoE Outputs	IEEE802.3af(PoE), IEEE802.3at (PoE+),Extra PoE up to 60W	PoE Not Supported, PoC Only
Compliance	Certification	FCC, CE, KC, RoHS	
	Surge Protection	IEC 61000-4-5 4kV(1.2 / 50us), 2kA(8 / 20us)	

Name		Single Port Mid Range Ethernet over Coaxial Converter (1300ft end-to-end)	
SKU		ALP-ECP-01T	ALP-ECP-01R
Interface	Coax	1 x 75Ω BNC (Female) - Ethernet over Coax (B-LinX)	
	Ethernet	1 x RJ45 - 100 Base-T	
Transmission Rate		100Mbps Full Duplex, (100Mbps between Intercoax devices)	
Transmission Distance	Ethernet	up to 1000 m when 10Mbps is used (5C-HFBT, RG-59 or better)	
	PoE (PoC)	Up to 400meter (RG-59, RG-6)	
LED Indication	Ethernet	1 x Link (Yellow) / 1 x ACT (Green)	
	Power	Input	B-Linx or DC48V-57V PoE Switch or DC48V-57V
PoE Output		IEEE802.3af (PoE),IEEE802.3at (PoE+), Extra PoE up to 60W with 57V Power Adaptor	PoE Not Supported, PoC Only
Compliance	Certification	FCC, CE, KC, RoHS	
	Surge Protection	IEC 61000-4-5 4kV(1.2 / 50us), 2kA(8 / 20us)	
Power	Input	B-Linx or DC12V-57V	PoE Switch or DC12V-57V
	PoE Outputs	IEEE802.3af(PoE), IEEE802.3at (PoE+),Extra PoE up to 60W	PoE Not Supported, PoC Only
Compliance	Certification	FCC, CE, KC, RoHS	
	Surge Protection	IEC 61000-4-5 4kV(1.2 / 50us), 2kA(8 / 20us)	

## Pole Mounts



**AUO-1W**  
White Pole Mount Bracket



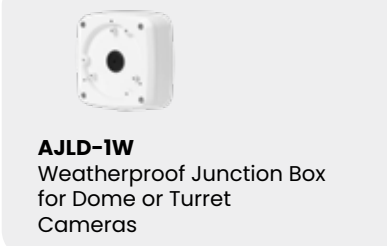
**AUO-1B**  
White Pole Mount Bracket



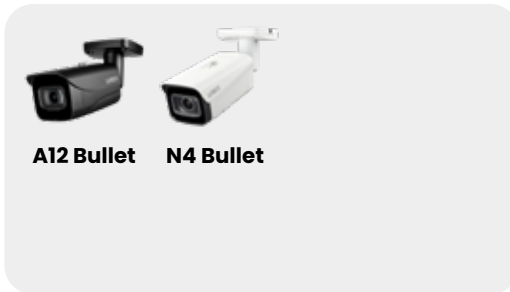
**ACCJ7R3W/ACJNCD3B /  
ACJNCD3BKB / ACCJ7R3B**  
Junction Box with 3 Screw  
Bas



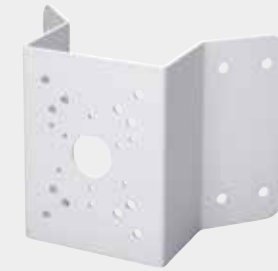
**ACJNCD4B/ACJNCD4BKB**  
Weatherproof Junction  
Box for Security Cameras 4  
Screw base



**AJLD-1W**  
Weatherproof Junction Box  
for Dome or Turret  
Cameras



## Corner Mount Brackets



**AUX-1W**  
Corner Mount Bracket

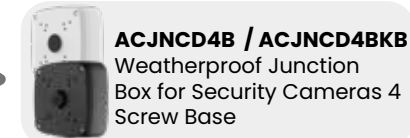
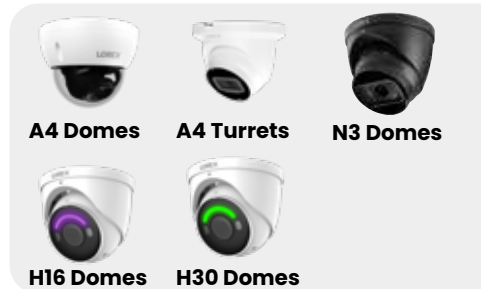
Junction Box not required.



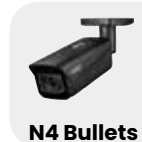
**ACCJ7R3W/ACJNCD3B /  
ACJNCD3BKB / ACCJ7R3B**  
Junction Box with 3 Screw  
Bas



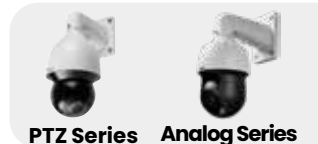
**AJLD-1W**  
Weatherproof Junction  
Box for Dome or Turret  
Cameras



**ACJNCD4B / ACJNCD4BKB**  
Weatherproof Junction  
Box for Security Cameras 4  
Screw Base



**AJLZ-1W**  
Junction Box for PTZ  
Cameras



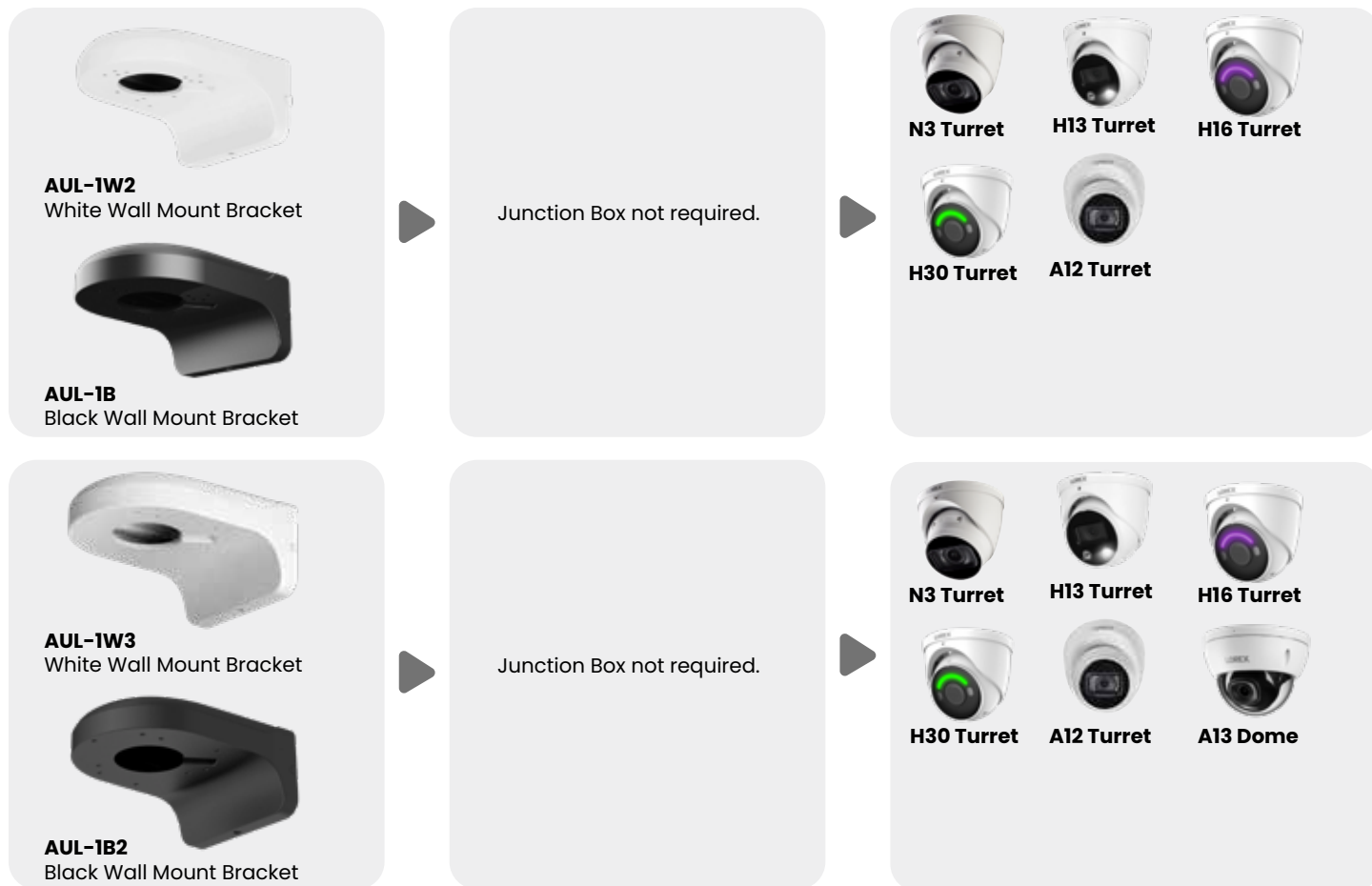
Scan the QR code to visit the product page for the full product compatibility list.



Scan the QR code to visit the product page for the full product compatibility list.



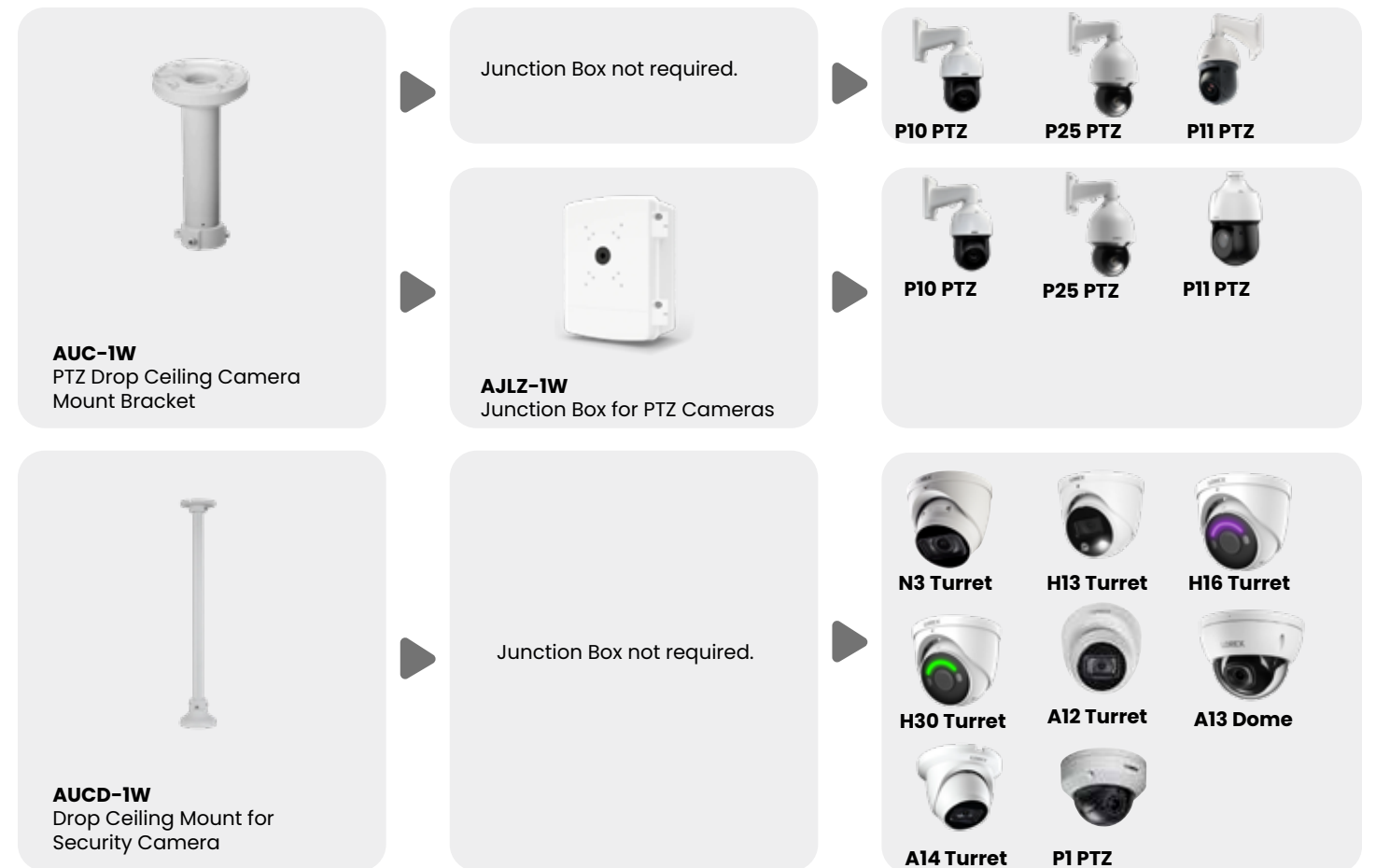
## Wall Mount Brackets



Scan the QR code to visit the product page for the full product compatibility list.



## Drop Ceiling Camera Mount Bracket



Scan the QR code to visit the product page for the full product compatibility list.

