

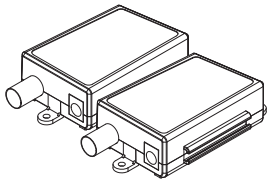
Quick Start Guide

ECP-01T / ECP-01R

Please read carefully the instruction manual before use. Contents of this manual are subject to change without prior notice for reasons such as functionality enhancements.

Rev.6.7

Package



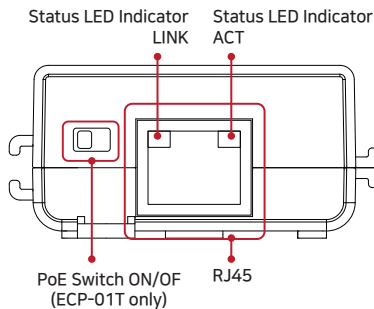
ECP-01T (Transmitter)
ECP-01R (Receiver)



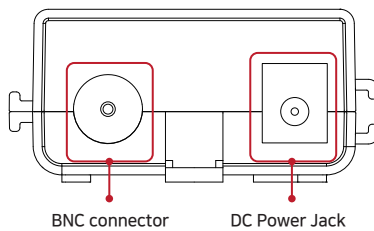
Quick Start Guide

Hardware Overview

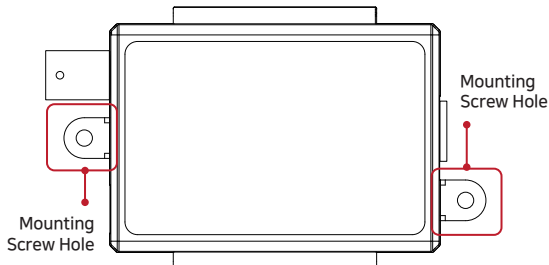
Right



Left



Top



LED Indicators

Indicator	Color	Function
LINK	Orange	Ethernet Data Act
ACT	Green	Ethernet Connect Act

Overview

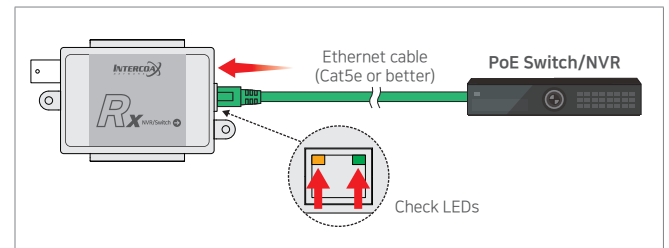
ECP-01 Series are High-Speed, long distance Ethernet & PoE extender that makes possible to transmit the Ethernet signal and PoE up to 400m through coaxial cables in different situations. It is cost-effective and time saving solution to migrate existing analog system to IP based system since ECP-01 series support easy installation utilizing the existing coaxial cable. With long distance transmission feature, the device makes to overcome 100 meters distance limitation easily and reduces the construction cost significantly compared with fiber optic configuration.

Features

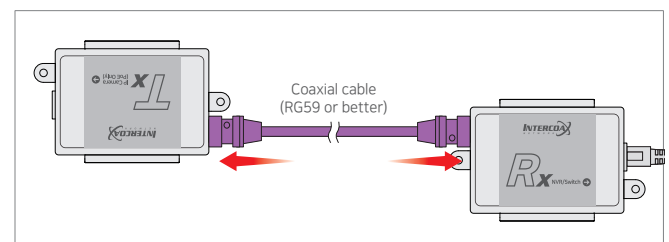
- Long reach Ethernet & PoE extension over existing coaxial cable
- Data + Power over coaxial cable
- Data distance up to 1000 m
- 100Mbps Full Duplex
- PoE, PoE+, Extra PoE (Max. 60W PoE output, ECP-01T model only with DC Power adapter)
- LED Indication (Data, Power)
- Plug & Play
- Support PoE, PoE+ Input (25.5W) from PoE Switch / PoE NVR (ECP-01R model only)
- Slim design

Installation Guide

1. Connect Ethernet cable (Cat5e or better) from PoE Switch/NVR to ECP-01R. Check LEDs on ECP-01R.

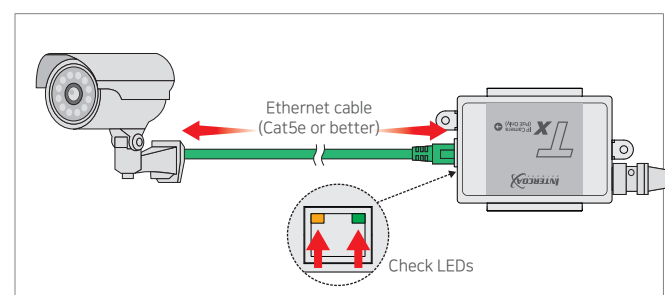


2. Connect coaxial cable (RG59 or better) to ECP-01R. Connect coaxial cable from ECP-01R to ECP-01T.



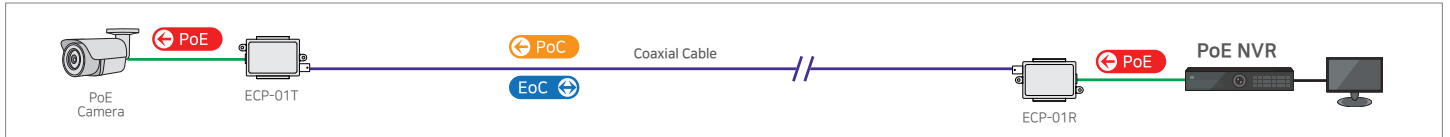
3. Connect Ethernet cable (Cat5e or better) from ECP-01T to IP Camera (PoE Model Only). Check LEDs on ECP-01T.

➔ Set ECP-01T, PoE Switch ON to supply direct power to IP camera. Set ECP-01T, PoE Switch OFF to connect PC or network switch devices.

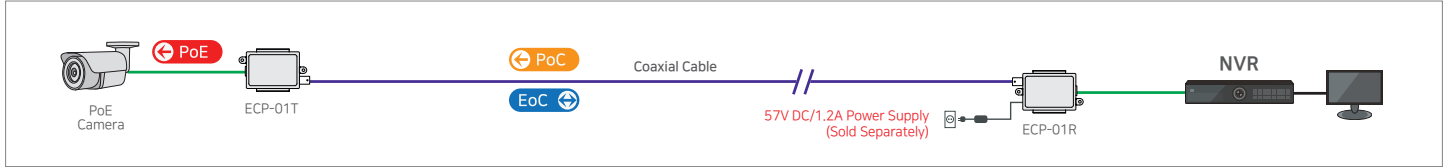


Applications

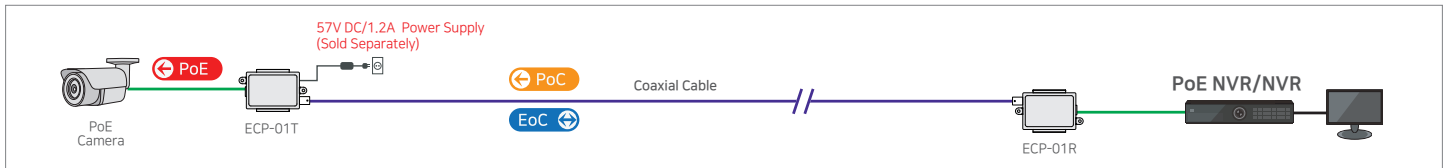
[Simply IP and PoE over Coax]



[High Power over Coax]



[Extra PoE (60W) over Coax]



Specification

Model		ECP-01T	ECP-01R
Interface	Coax	1 x 75Ω BNC (Female) - Ethernet over Coax (B-LinX)	
	Ethernet	1 x RJ45 - 100 Base-T	
Transmission Rate		100Mbps Full Duplex (100Mbps between Intercoax devices)	
Transmission Distance	Ethernet	up to 400 m when 100Mbps is used up to 1000 m when 10Mbps is used (5C-HFBT, RG-59 or better)	
	PoE (PoC)	up to 400meter (RG-59, RG-6)	
LED Indication	Ethernet	1 x Link (Yellow) / 1 x ACT (Green)	
Power	Input	B-Linx or DC48V~57V	PoE Switch or DC48V~57V
	PoE Output	IEEE802.3af (PoE), IEEE802.3at (PoE+), Extra PoE up to 60W with 57V Power Adaptor	PoE Not Supported PoC Only
Mechanical	Dimension	83(L) x 51(W) x 24(H)mm	
	Weight	52g	
Environment	Operating Temp	-20 ~ 60°C	
	Storage Temp	-30 ~ 80°C	
	Relative Humidity	10% ~ 90%	
Compliance	Certification	FCC, CE, KC, RoHS	
	Surge Protection	IEC 61000-4-5 4kV(1.2 / 50us), 2kA(8 / 20us)	
Optional Accessories		57VDC / 1.2A External Power Supply	

Caution

- Please install the device following the installation guide.
- Do not touch the device and cable with wet hands.
- Keep away from moisture and shock.
- Do not install near any heat sources such as radiators, heat registers, stoves or other apparatus that produce heat.
- Indoor use only. (Use waterproof junction box when it is used in outdoor)
- Do not use for other purposes.
- Do not disassemble or modify this device.
- Do not put any sticker or paint on it.
- If this device is defective or malfunctioning, please unplug the power source immediately and contact dealer or service center.
- Please use the rated power supply for the product.
- Connect DC power to this device first and then to AC outlet.

Warranty

- This device has passed the quality control and product inspection.
- Please install and use according to the installation guide.
- The warranty period for this product is 24 months from the date of purchase.
- If this device is defective or malfunctioning, please unplug the power adapter immediately and contact dealer or service center.
- Any damages or breakage from user's abuse, accident, modification or natural disasters will not be covered manufacturer's warranty.



INTERCOAX
NETWORK

Please visit below website for more detailed information.

Web: <http://www.intercoax.com> Tel: +82. 31. 365. 3133~4

E-mail: info@intercoax.com Fax: +82. 31. 365. 3135

Intercoax Co., Ltd.

This device complies with part 15 of the fcc rules. Operation is subject to the following two conditions :

- (1) This device may not cause harmful interference, and
- (2) This device must accept any interference received including interference that may cause undesired operation